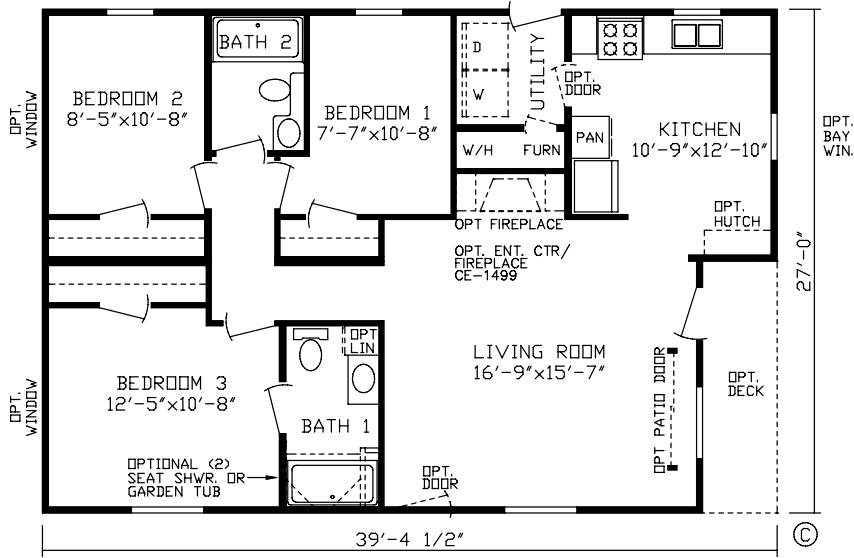


# *Harmony Homes*

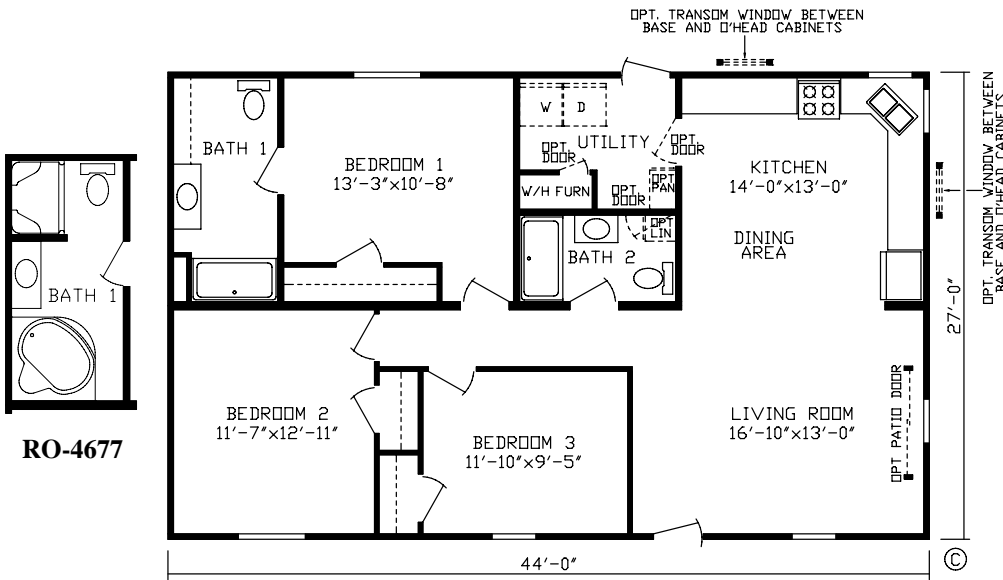


*Get Back To Living*

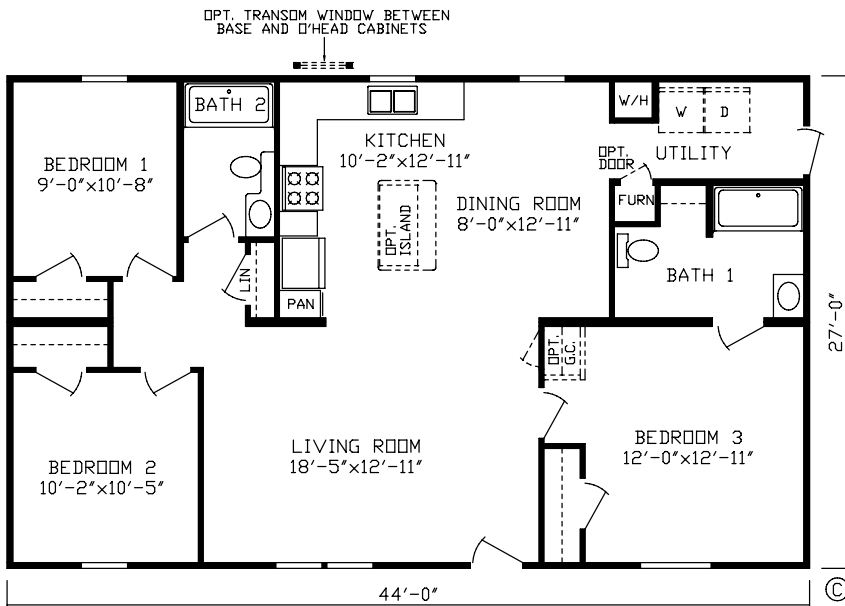
[www.homesfromharmony.com](http://www.homesfromharmony.com)



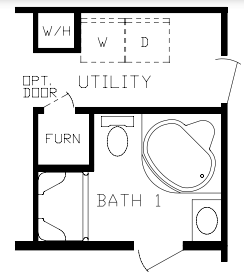
**Creston Model # 150013 1009 Sq. Ft.**



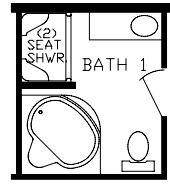
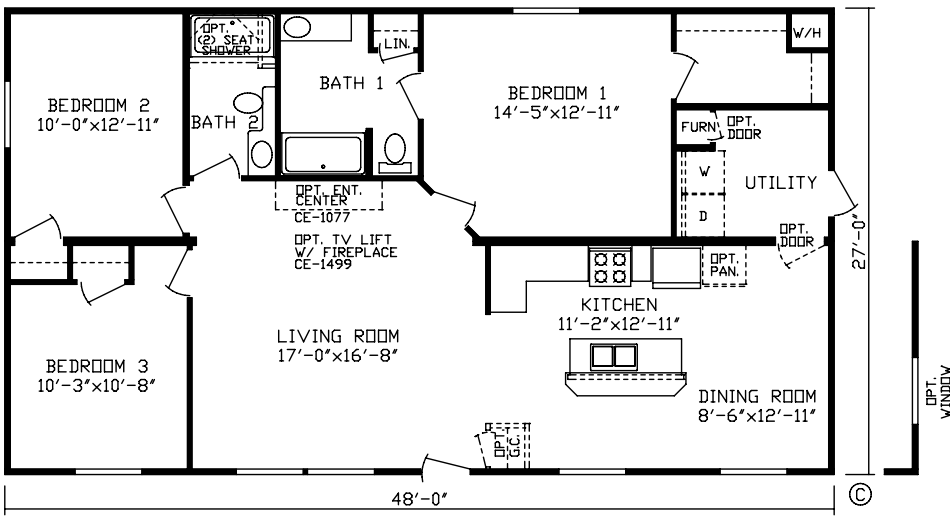
**Douglas Model # 150000 1188 Sq. Ft.**



**Howard Model # 150001 1188 Sq. Ft.**

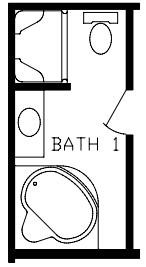
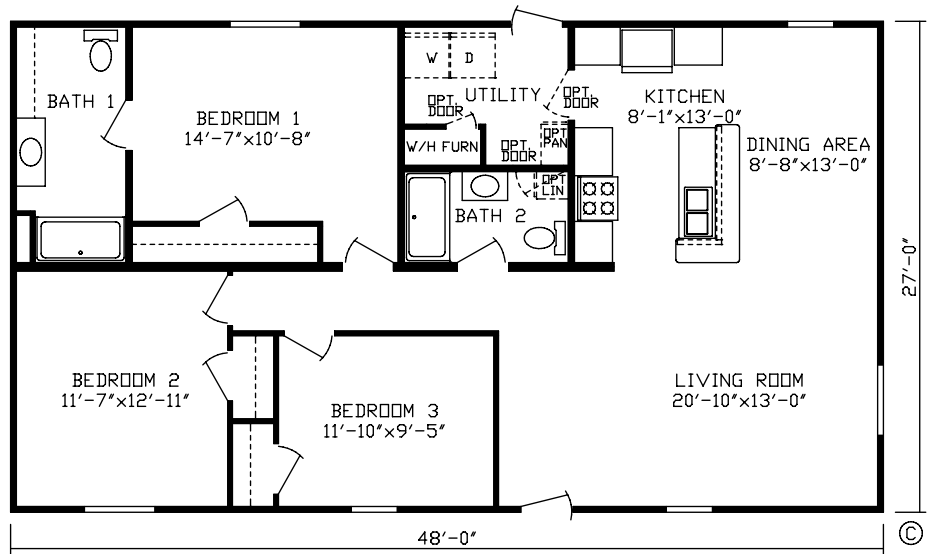


**RO-4692**



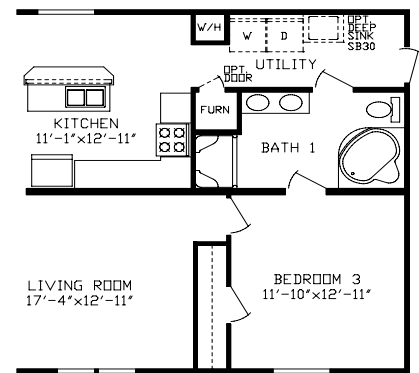
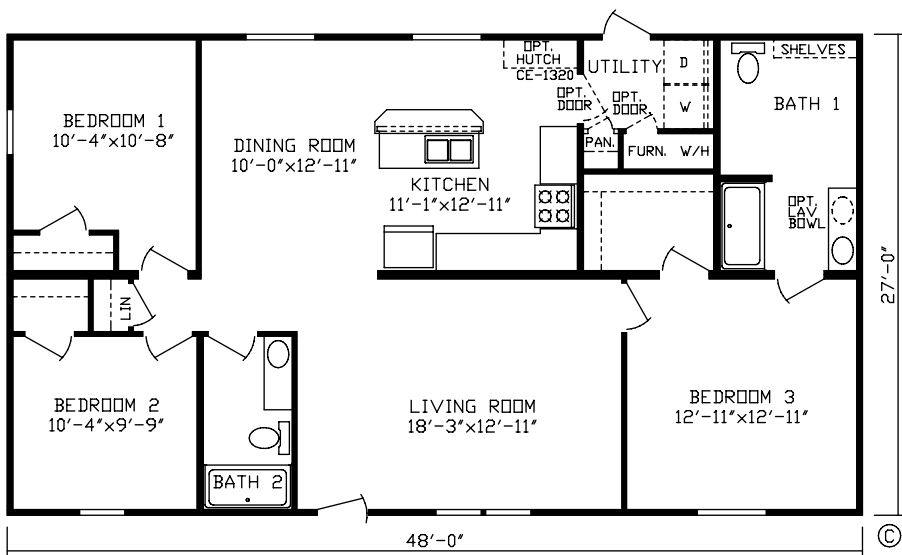
RO-5008

*Nicholas* Model # 150015 1296 Sq. Ft.



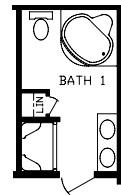
RO-4677

*Quincy* Model # 150008 1296 Sq. Ft.

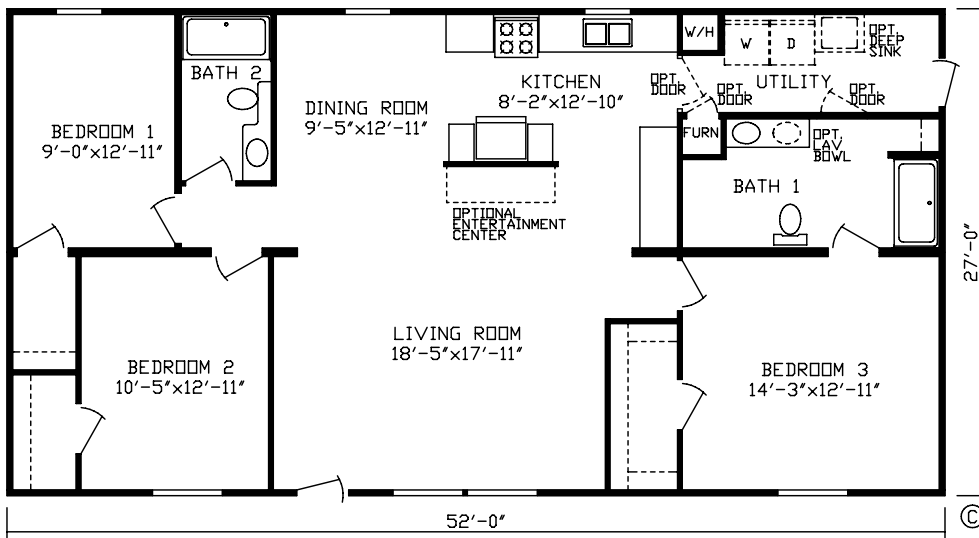


Model # 150010 Same Rear End  
As Model # 150007

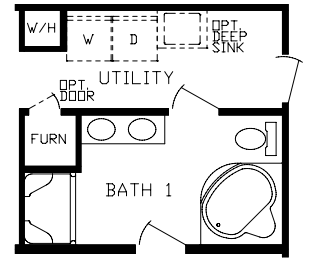
*Anton* Model # 150007 1296 Sq. Ft.



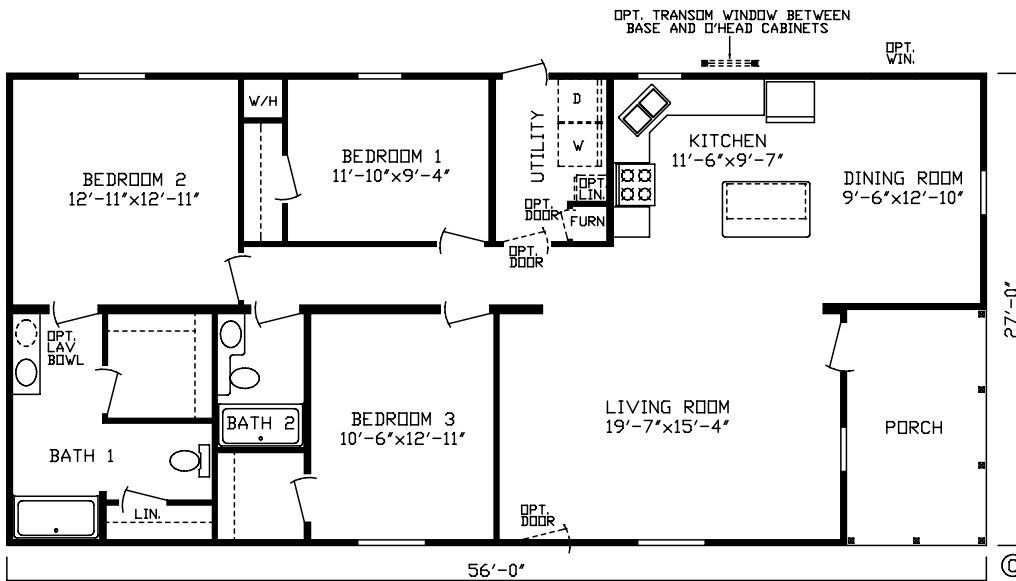
RO-4721



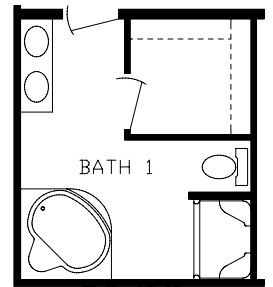
*Vernon* Model # 150004 1404 Sq. Ft.



**RO-4698**



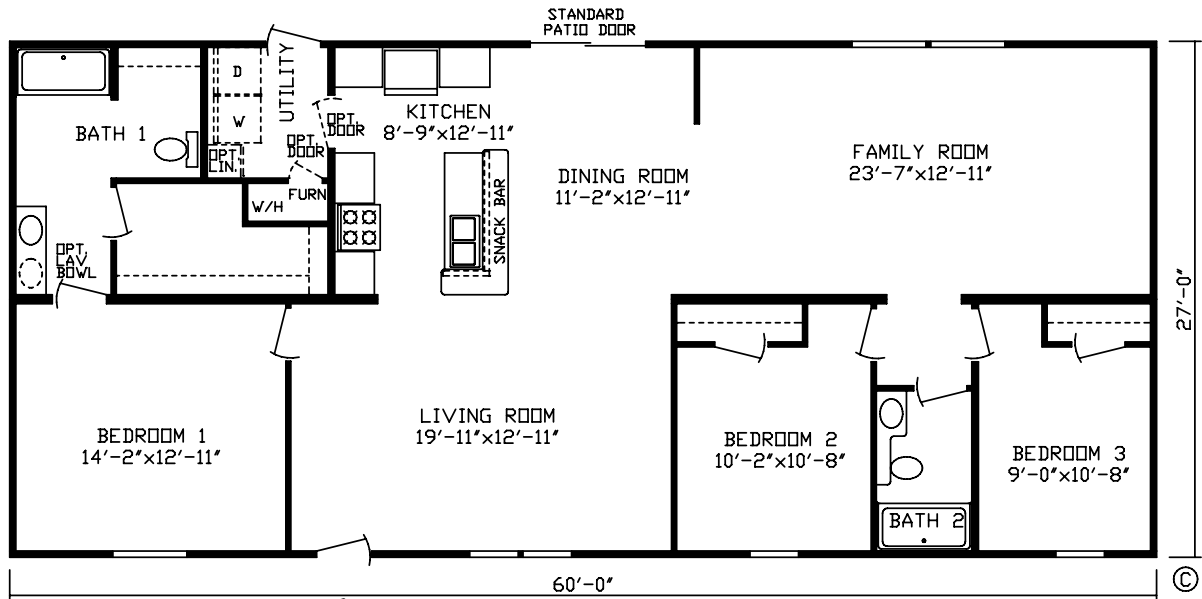
*La Monte* Model # 150005 1393 Sq. Ft.



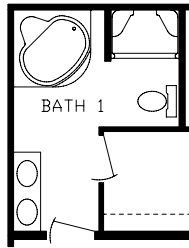
**RO-4868**



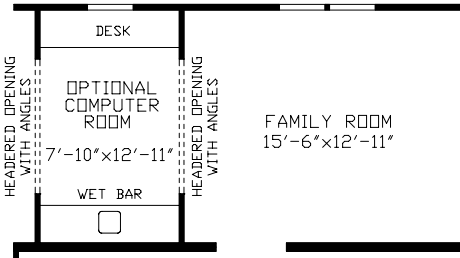




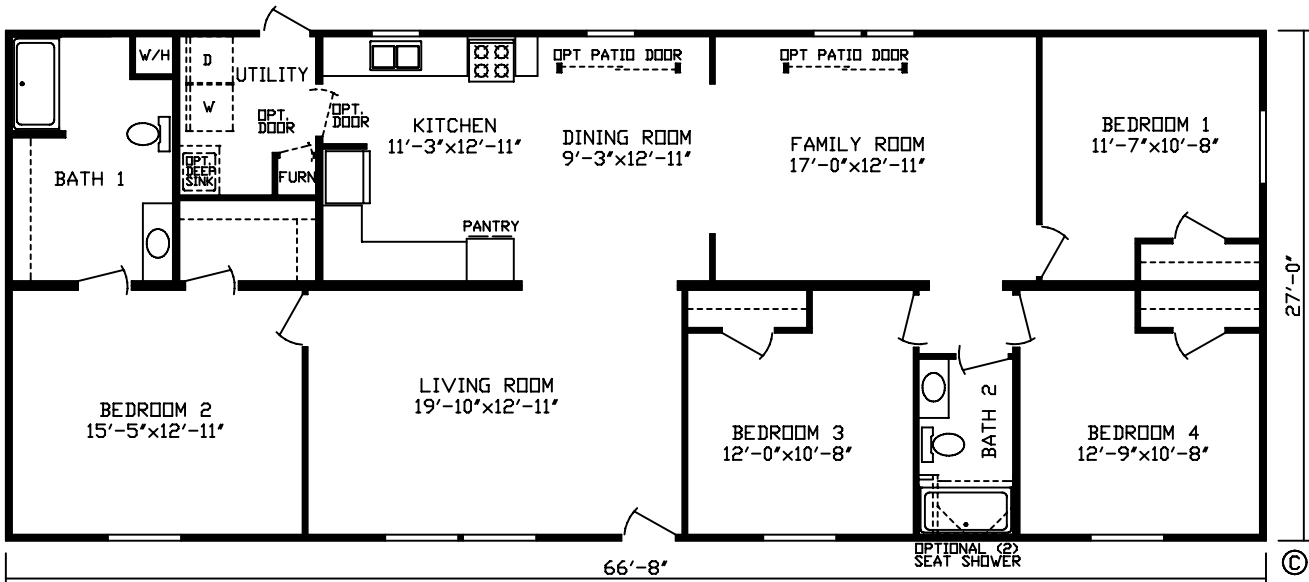
*Marvel* Model # 150009 1620 Sq. Ft.



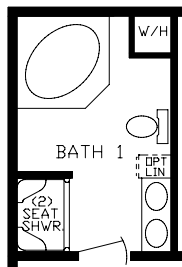
RO-4719



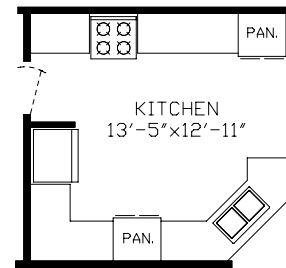
RO-4718



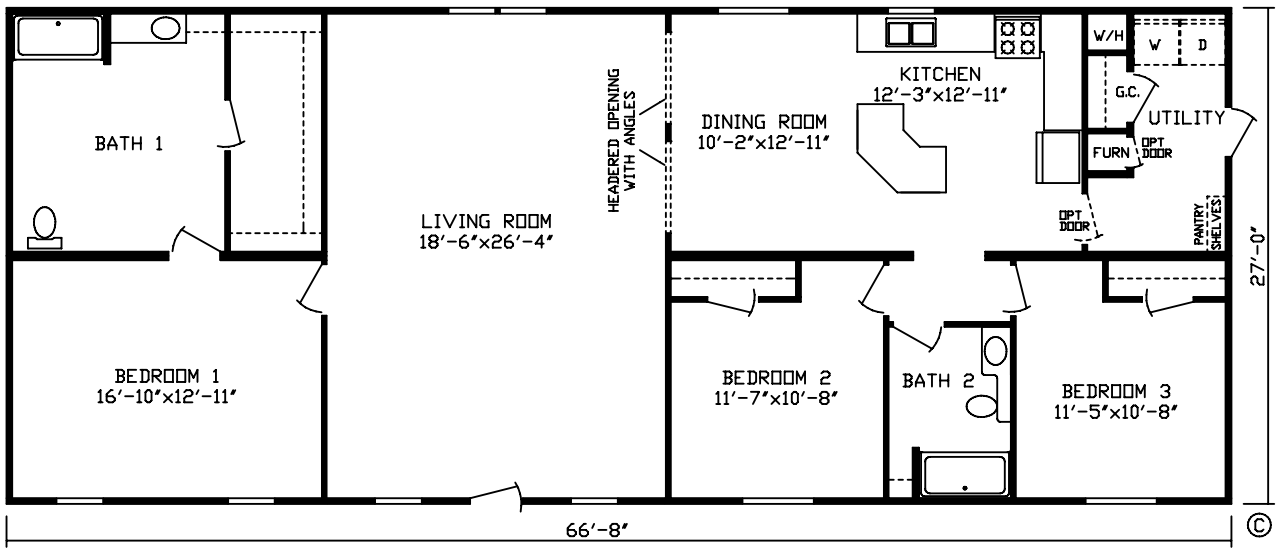
*Ludwig* Model # 150014 1800 Sq. Ft.



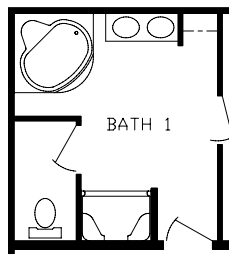
RO-4997



RO-4978



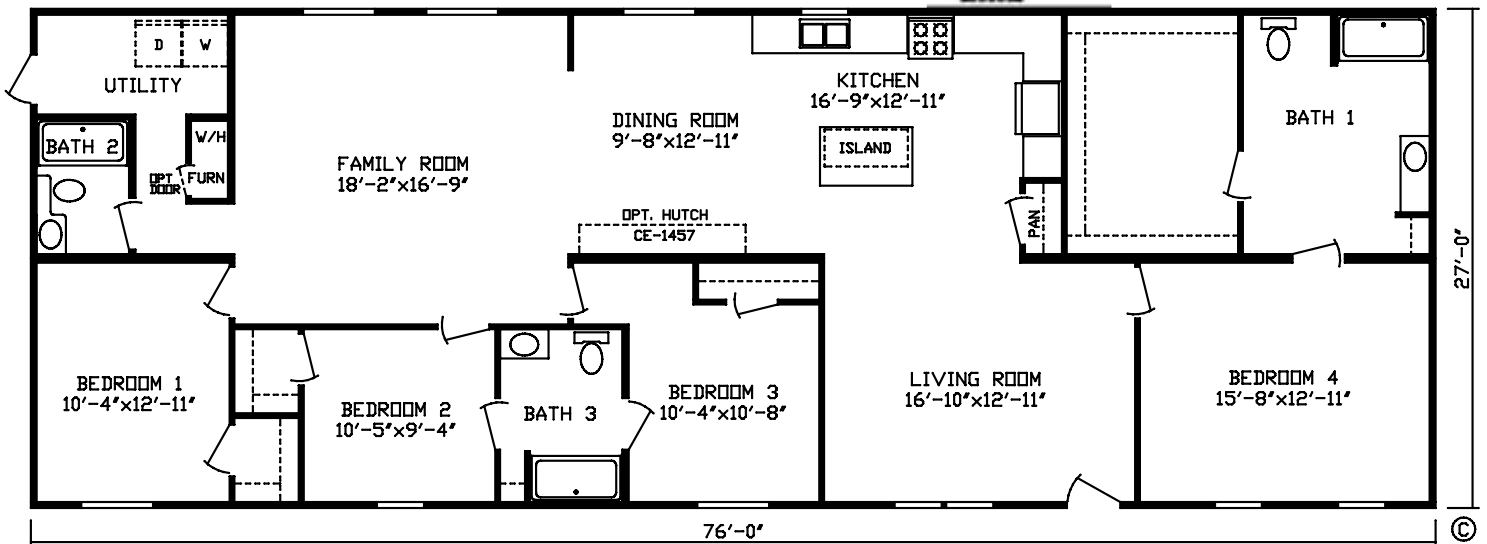
*Alexandre* Model # 150002 1800 Sq. Ft.



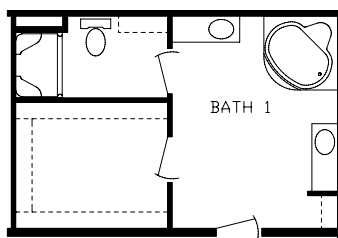
RO-4701



OPT. TRANSOM WINDOW BETWEEN BASE AND UPHEAR CABINETS



*Walling Ford* Model # 150003 2052 Sq. Ft.



RO-4704

# STANDARD FEATURES

## Exterior Features:

- Residential 8' Flat Ceilings
- 2"x4" Exterior walls – 16" O.C. w/ R-11 Insulation
- Nominal 3/12 Roof Pitch
- Vinyl Siding by "Stylecrest" With Lifetime Warranty and Color Matching Corner Posts
- OSB Sheathing Wrap on Exterior Walls
- 12" Shutters – (FDS only on Sectionals)
- 12" Shutters (FDS & Hitch End on Singlewides)
- 20 Year "Owens Corning" Fiberglass Shingles
- 7/16" OSB Roof Sheathing
- 20 lb. Roof Load
- 2" x 6" Floor Joists – 16" O.C. (14' & 28' Wides)
- 5/8" Cresdek Decking
- House-Type Front Door With Window & Storm
- Blank Fiberglass Rear Door with Peep Hole
- Light Fixtures at all Exterior Doors
- Deadbolt Lock at Front Door
- Detachable Hitch
- White Thermopane Low E Windows
- Exterior Light at Front & Rear Doors
- Aluminum Fascia

## Interior Features:

- Hand Stamped Textured Ceiling
- Interior Décor Selections With Colored Feature Walls
- Vinyl Wall Panels Throughout
- Brown Interior Doors
- Interior Door Stops
- Flat Moldings Throughout
- 16 oz. Plush Carpet by "Shaw"
- 5lb Rebond Carpet Pad
- Valances in Living Areas, Dining Room & Kitchen
- Mini Blinds Throughout
- Overhead Glass Light Fixtures
- Ventilated Vinyl Closet Shelving
- Wire & Vent for Electric Dryer
- Bedroom Ceiling Lights
- Tack Strip Carpet Installation

## Electrical, Plumbing & Heating Features:

- Smoke Detectors in Main Living Areas & All Bedrooms
- Insulated Heat Ducts
- 100 AMP Service
- Gas Furnace
- 5 Wire Thermostat
- 30 Gallon Electric Water Heater
- Zone III construction With R-29, R-11, R-11 Insulation
- Exterior Electrical Receptacle
- Plumb & Wire for Washer/Dryer
- Copper Wiring
- PEX Plumbing Featuring Hot & Cold Water Supplies
- Main Line Water Shut Off Valve at Water Heater
- GFI Protected Receptacles in Kitchen & Baths
- Ceiling Lights in All Rooms

## Kitchen Features:

- 30" Overhead Cabinets
- Cabinet Doors Above Range
- Flat Panel Cabinetry
- Fixed Center Shelf in Overhead Cabinets
- Bank of Drawers with Dove Tail Construction
- Whirlpool Appliances: 30" Free Standing Gas Range; 18CF Frost Free Refrigerator
- 30" Power Range Hood
- Laminated Countertops
- "Congoleum" No Wax Vinyl Flooring
- Stainless Steel Kitchen Sink
- Metal Drawer Guides
- GFCI Kitchen Receptacles

## Bath Features:

- 60" Tub/Shower With Surround Guest Bath
- Laminated Countertops
- Porcelain "Water Saver" Commodes
- Mirror Above Sinks
- "Congoleum" No Wax Flooring
- Power Exhaust Fans – All Baths
- GFCI Bath Receptacles

Comments: \_\_\_\_\_  
\_\_\_\_\_  
\_\_\_\_\_

*Harmony Homes* P.O. Box 27 Nappanee, IN 46550

©Copyright 2010 Harmony Homes, Nappanee, Indiana

Note: For model dimensions, our standards and standards of the industry generally include a nominal 4-foot allowance for hitch length plus allowance for other appurtenances for width and for length normally included in measurements for highway movement. Rear bedroom dimensions include bay, unless bay is optional on a particular unit or is omitted by special order. Room sizes are nominal and sometimes the dimension includes wall thickness. Designs, specifications and prices are subject to change without notice. Some optional items are shown. Some tires, wheels, brakes and axles are reused after careful inspection.

04-10 SP 10

