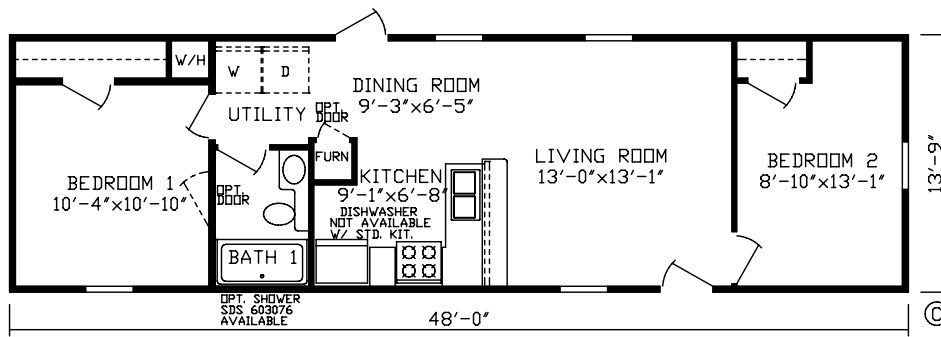


Harmony Homes

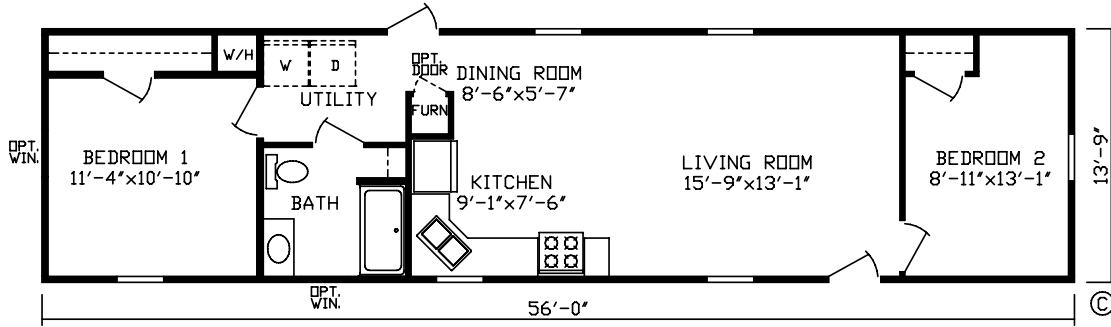


Get Back To Living

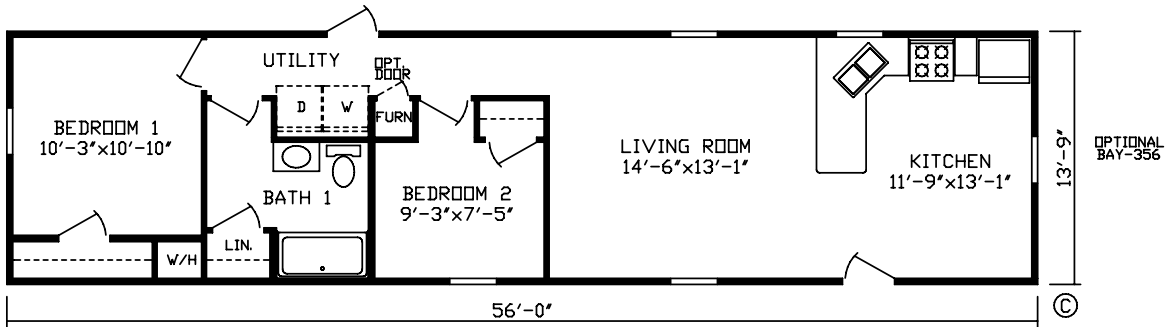
www.homesfromharmony.com



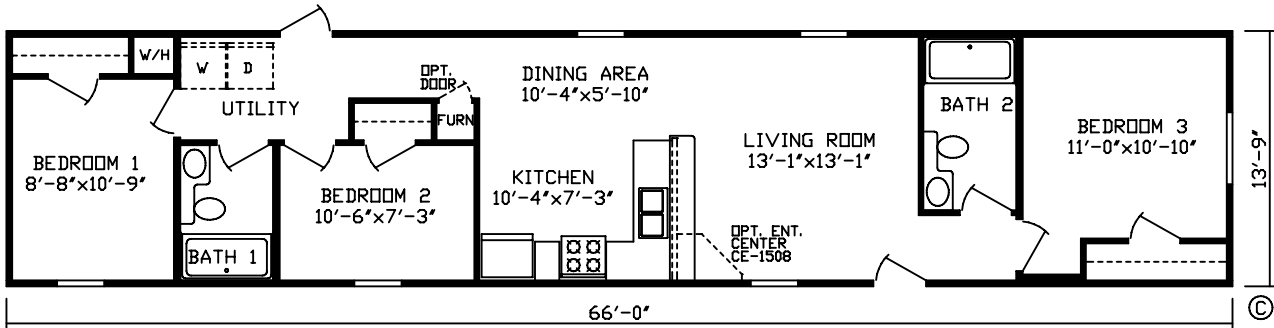
Milton Model # 150501 660 Sq. Ft.



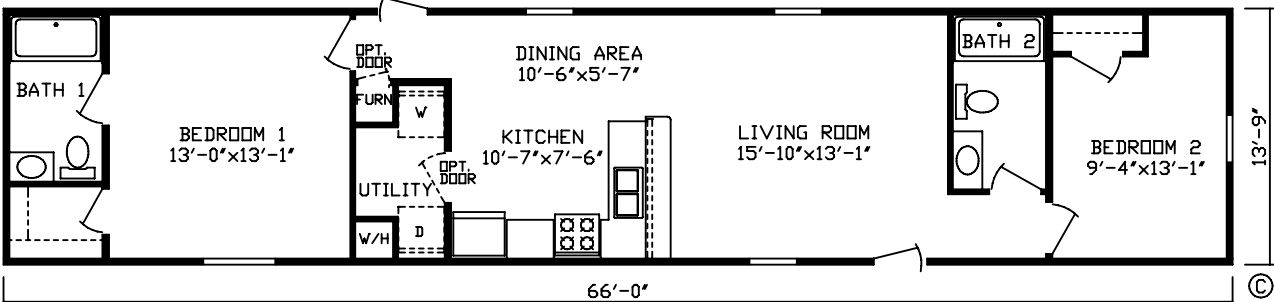
Pierre Model # 150503 770 Sq. Ft.



Arnold Model # 150508 770 Sq. Ft.

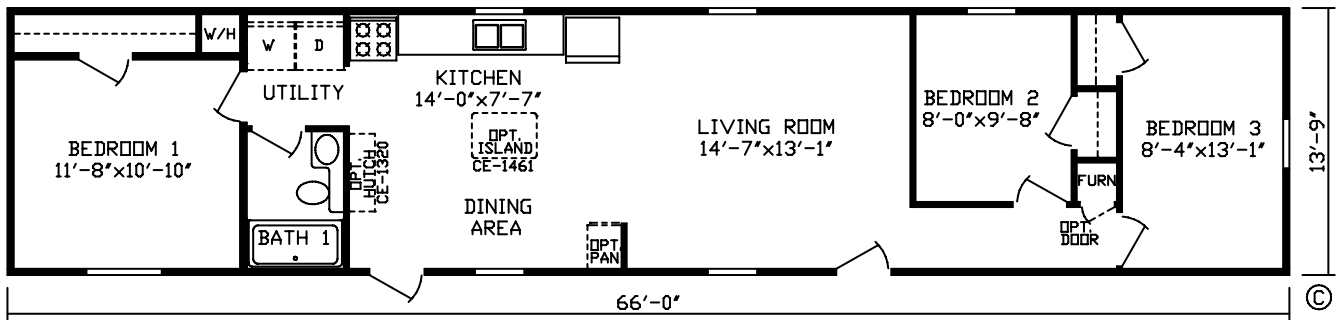


Alban Model # 150519 908 Sq. Ft.

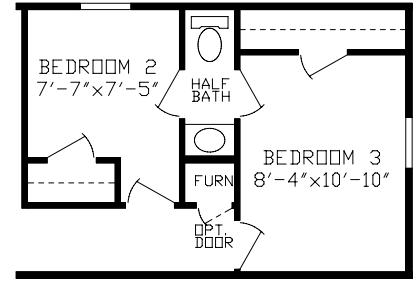


Morton Model # 150528 908 Sq. Ft.

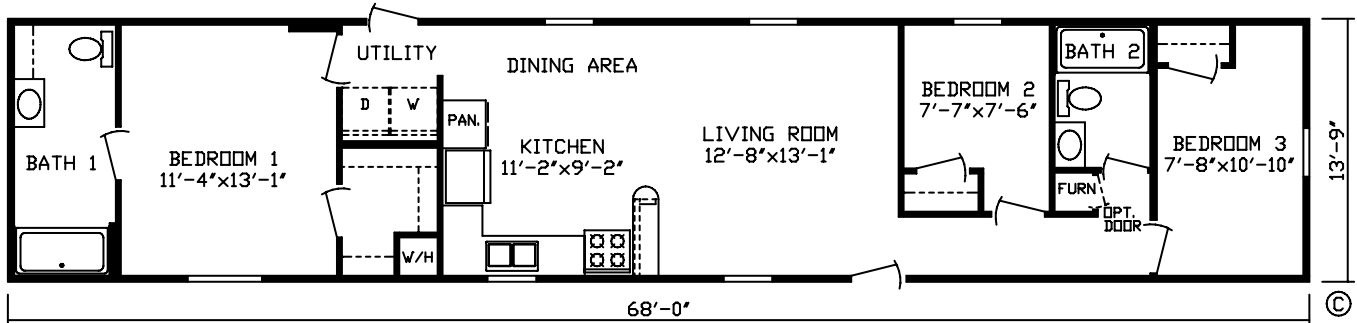
Flipped Versions Available For All Single Section Homes



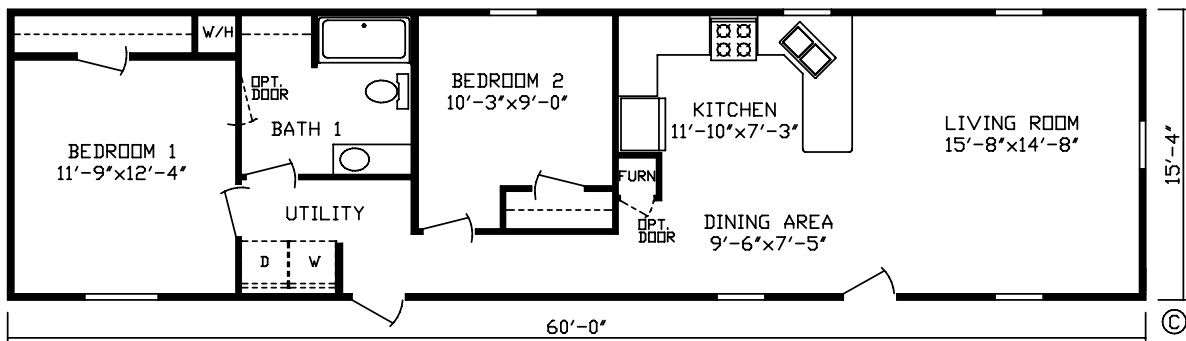
Astor Model # 150500 908 Sq. Ft.



RO-4668

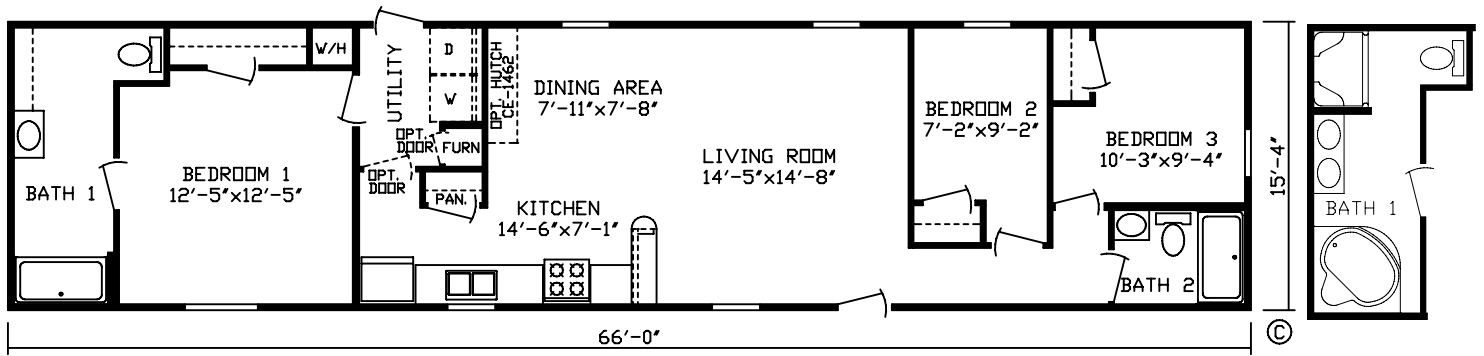


Louis Model # 150504 935 Sq. Ft.



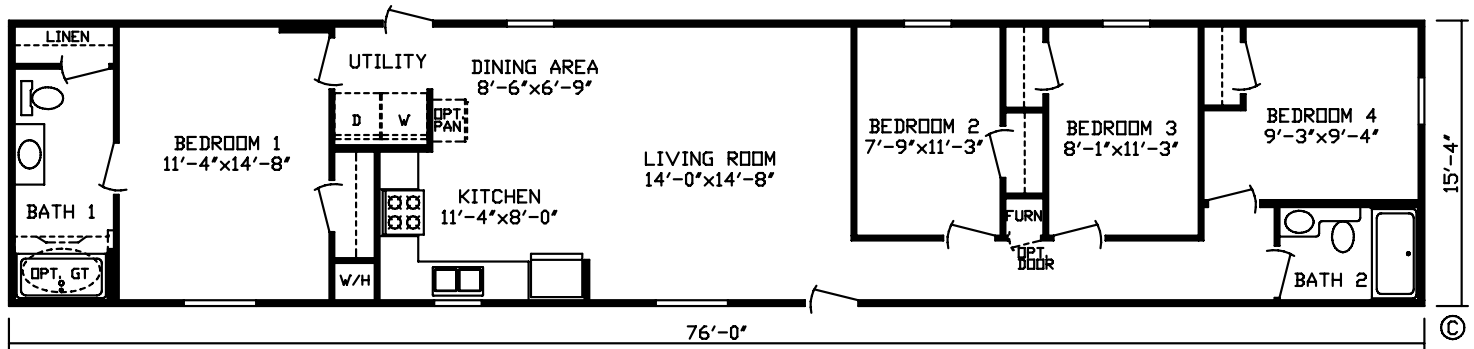
Hendrik Model # 150510 918 Sq. Ft.

Flipped Versions Available For All Single Section Homes

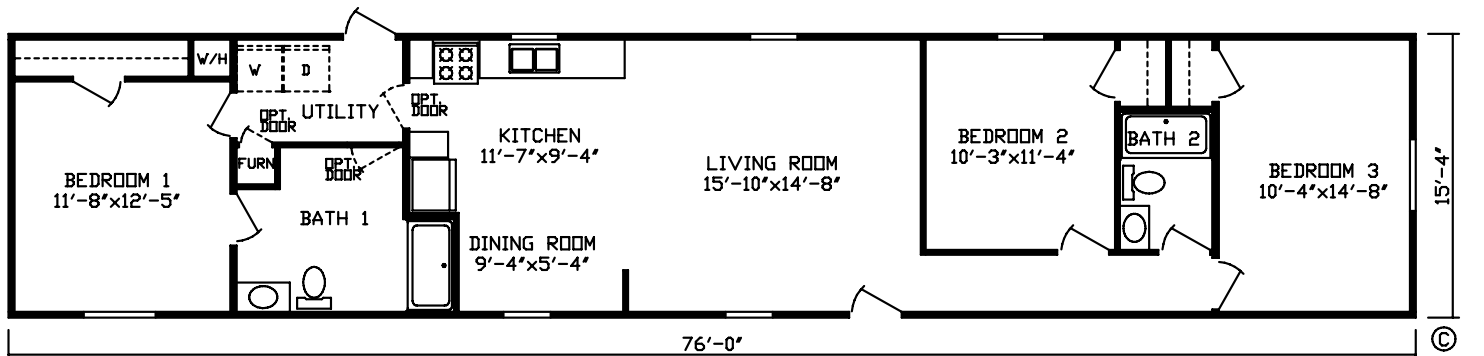


Lloyd Model # 150505 1012 Sq. Ft.

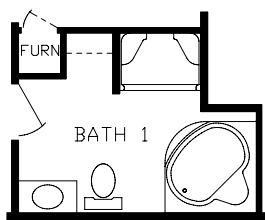
RO-4714



Branco Model # 150522 1165 Sq. Ft.



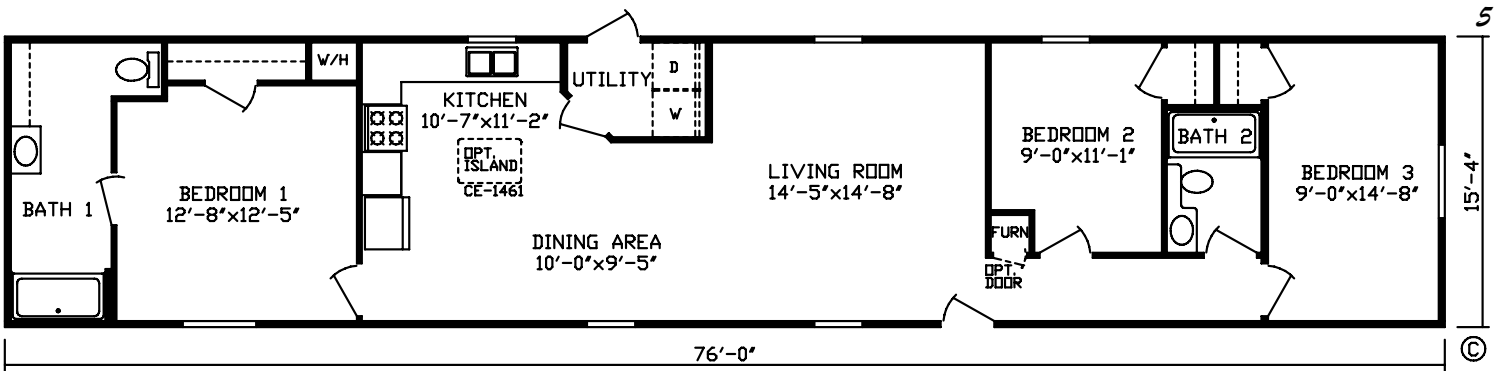
Larson Model # 150502 1165 Sq. Ft.



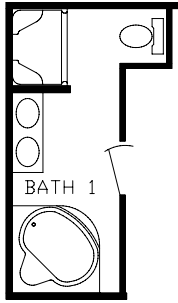
RO-4700



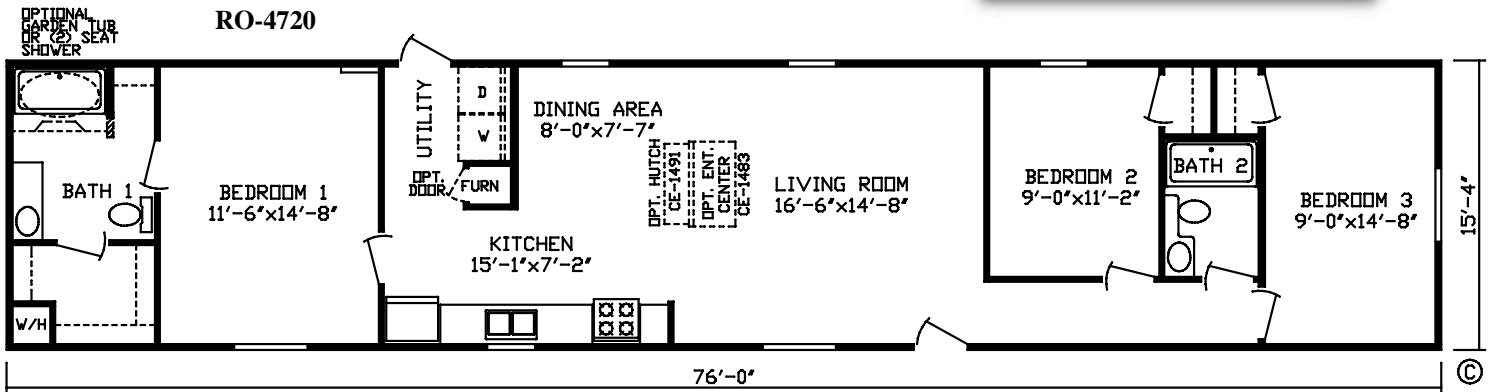
Flipped Versions Available For All Single Section Homes



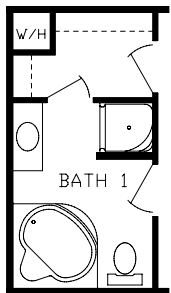
Lennox Model # 150506 1165 Sq. Ft.



RO-4720



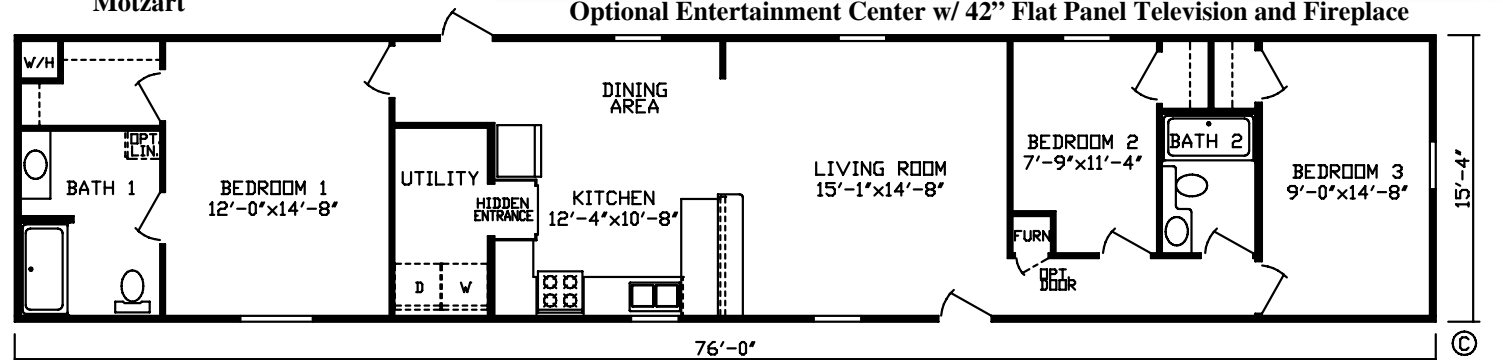
Baytowne Model # 150509 1165 Sq. Ft.



RO-4988
For The
Motzart



Optional Entertainment Center w/ 42" Flat Panel Television and Fireplace



Motzart Model # 150530 1165 Sq. Ft.

Flipped Versions Available For All Single Section Homes

STANDARD FEATURES

Exterior Features:

- Residential 8' Flat Ceilings
- 2"x4" Exterior walls – 16" O.C. w/ R-11 Insulation
- Nominal 3/12 Roof Pitch
- Vinyl Siding by "Stylecrest" With Lifetime Warranty and Color Matching Corner Posts
- OSB Sheathing Wrap on Exterior Walls
- 12" Shutters – (FDS only on Sectionals)
- 12" Shutters (FDS & Hitch End on Singlewides)
- 20 Year "Owens Corning" Fiberglass Shingles
- 7/16" OSB Roof Sheathing
- 20 lb. Roof Load
- 2" x 6" Floor Joists – 16" O.C. (14' & 28' Wides)
- 5/8" Cresdek Decking
- House-Type Front Door With Window & Storm
- Blank Fiberglass Rear Door with Peep Hole
- Light Fixtures at all Exterior Doors
- Deadbolt Lock at Front Door
- Detachable Hitch
- White Thermopane Low E Windows
- Exterior Light at Front & Rear Doors
- Aluminum Fascia

Interior Features:

- Hand Stamped Textured Ceiling
- Interior Décor Selections With Colored Feature Walls
- Vinyl Wall Panels Throughout
- Brown Interior Doors
- Interior Door Stops
- Flat Moldings Throughout
- 16 oz. Plush Carpet by "Shaw"
- 5lb Rebond Carpet Pad
- Valances in Living Areas, Dining Room & Kitchen
- Mini Blinds Throughout
- Overhead Glass Light Fixtures
- Ventilated Vinyl Closet Shelving
- Wire & Vent for Electric Dryer
- Bedroom Ceiling Lights
- Tack Strip Carpet Installation

Electrical, Plumbing & Heating Features:

- Smoke Detectors in Main Living Areas & All Bedrooms
- Insulated Heat Ducts
- 100 AMP Service
- Gas Furnace
- 5 Wire Thermostat
- 30 Gallon Electric Water Heater
- Zone III construction With R-29, R-11, R-11 Insulation
- Exterior Electrical Receptacle
- Plumb & Wire for Washer/Dryer
- Copper Wiring
- PEX Plumbing Featuring Hot & Cold Water Supplies
- Main Line Water Shut Off Valve at Water Heater
- GFI Protected Receptacles in Kitchen & Baths
- Ceiling Lights in All Rooms

Kitchen Features:

- 30" Overhead Cabinets
- Cabinet Doors Above Range
- Flat Panel Cabinetry
- Fixed Center Shelf in Overhead Cabinets
- Bank of Drawers with Dove Tail Construction
- Whirlpool Appliances: 30" Free Standing Gas Range; 18CF Frost Free Refrigerator
- 30" Power Range Hood
- Laminated Countertops
- "Congoleum" No Wax Vinyl Flooring
- Stainless Steel Kitchen Sink
- Metal Drawer Guides
- GFCI Kitchen Receptacles

Bath Features:

- 60" Tub/Shower With Surround Guest Bath
- Laminated Countertops
- Porcelain "Water Saver" Commodes
- Mirror Above Sinks
- "Congoleum" No Wax Flooring
- Power Exhaust Fans – All Baths
- GFCI Bath Receptacles

Comments: _____

Harmony Homes P.O. Box 27 Nappanee, IN 46550

©Copyright 2010 Harmony Homes, Nappanee, Indiana

Note: For model dimensions, our standards and standards of the industry generally include a nominal 4-foot allowance for hitch length plus allowance for other appurtenances for width and for length normally included in measurements for highway movement. Rear bedroom dimensions include bay, unless bay is optional on a particular unit or is omitted by special order. Room sizes are nominal and sometimes the dimension includes wall thickness. Designs, specifications and prices are subject to change without notice. Some optional items are shown. Some tires, wheels, brakes and axles are reused after careful inspection.

04-10 SP 10

